

9.Maintenance

9.1 Error Code

No.	Malfunction name	Display on dual-8 nixie tube	A/C Status	Possible reasons	Solution
1	Malfunction of indoor ambient temperature sensor	F1	Under heating, cooling or SE mode, the unit will stop operation as it reaches the temperature point. Under fan mode, the unit operates according to the original status.	1. The wiring terminal between indoor ambient temperature sensor and controller is loosened or poorly contacted; 2. There's short circuit due to trip-over of the parts on controller; 3. Indoor ambient temperature sensor is damaged (Please check it by referring to the resistance table for temperature sensor) 4. Main board is broken.	Refer to maintenance flowchart.
2	Malfunction of indoor tube temperature sensor	F2	Under heating, cooling or SE mode, the unit will stop operation as it reaches the temperature point. Under fan mode, the unit operates according to the original status.	1. The wiring terminal between indoor tube temperature sensor and controller is loosened or poorly contacted; 2. There's short circuit due to trip-over of the parts on controller; 3. indoor tube temperature sensor is damaged (Please check it by referring to the resistance table for temperature sensor) 4. Main board is broken.	Refer to maintenance flowchart.
3	Malfunction of outdoor tube temperature sensor	F4	Under heating, cooling or SE mode, the unit will stop operation as it reaches the temperature point. Under fan mode, the unit operates according to the original status.	1. The wiring terminal between outdoor tube temperature sensor and controller is loosened or poorly contacted; 2. There's short circuit due to trip-over of the parts on controller; 3. indoor tube temperature sensor is damaged (Please check it by referring to the resistance table for temperature sensor) 4. Main board is broken.	Refer to maintenance flowchart.
4	Malfunction of temperature sensor at air outlet	FJ	Under heating, cooling or SE mode, the unit will stop operation as it reaches the temperature point. Under fan mode, the unit operates according to the original status.	1. The wiring terminal between temperature sensor at air outlet and controller is loosened or poorly contacted; 2. There's short circuit due to trip-over of the parts on controller; 3. indoor tube temperature sensor is damaged (Please check it by referring to the resistance table for temperature sensor) 4. Main board is broken.	Refer to maintenance flowchart.
5	Malfunction of indoor ambient temperature sensor or indoor tube temperature sensor	EP	Compressor stops operation. The fan operates according to setting status.	1. The wiring terminal between indoor tube temperature sensor or indoor ambient temperature sensor and controller is loosened or poorly contacted; 2. There's short circuit due to trip-over of the parts on controller; 3. indoor tube temperature sensor or indoor ambient temperature sensor is damaged (Please check it by referring to the resistance table for temperature sensor) 4. Main board is broken.	Refer to maintenance flowchart.

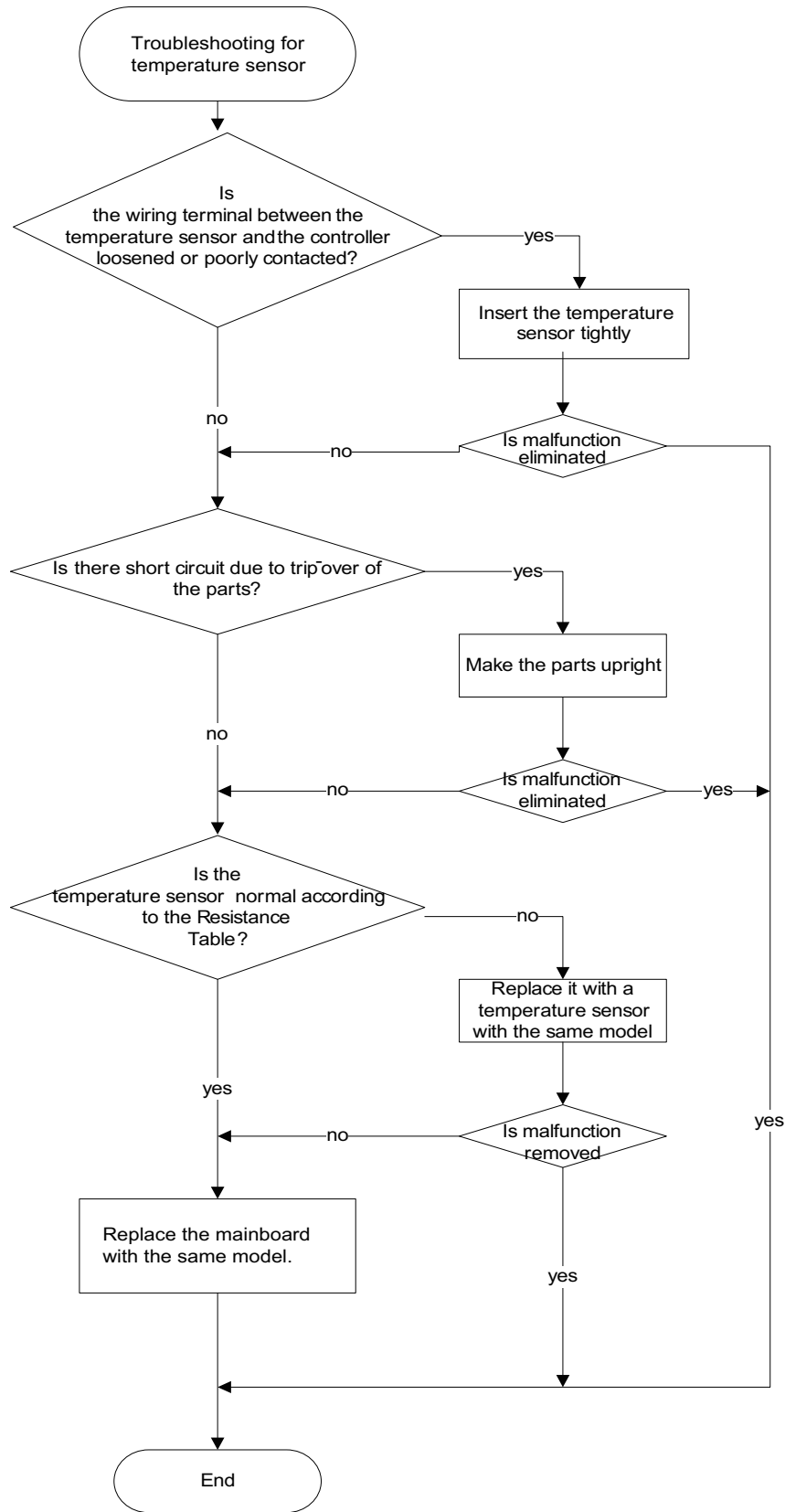
NO.	Malfunction name	Display on dual-8 nixie tube	A/C Status	Possible reasons	Solution
6	Refrigerant lacking protection of system	F0	The compressor stops and fan operates according to set fan speed.	It indicates that the system may be lacking refrigerant.	The malfunction code will be cleared if power off the unit and then energize it. Then the unit will resume operation.
7	System overload protection	H3	The compressor stops and fan operates according to set fan speed.	It indicates that the system occurs overload consecutively and may exist malfunction.	The malfunction code will be cleared if power off the unit and then energize it. Then the unit will resume operation.
8	Heating defrosting of compressor	H1	The fan and reversing valve are power-fail, but the compressor is not power-fail.	When using compressor to conduct heating, the accumulative operating time of compressor is too long, which leads to frosting due to low temperature of ambient environment.	The malfunction code will be cleared if power off the unit and then energize it. Then the unit will resume operation.
9	Overload malfunction	E8	During cooling or drying operation, indoor fan operates, while compressor, outdoor fan and water-striking motor stop. "E8" is displayed.	<ol style="list-style-type: none"> 1. The environment is formidable. 2. Heat exchangers are too dirty or the air inlet/outlet is blocked. 3. Fan motor is not working Abnormal fan speed; fan speed is too low or the fan doesn't run. 4. Compressor doesn't work normally. Strange noise or leakage occurs. Temperature of the shell is too high. 5. System is blocked inside(dirt block, ice block, oil block, Y-valve not fully open). 6. Temperature sensor of main board can't detect correctly. 	Refer to maintenance flowchart.

Note:

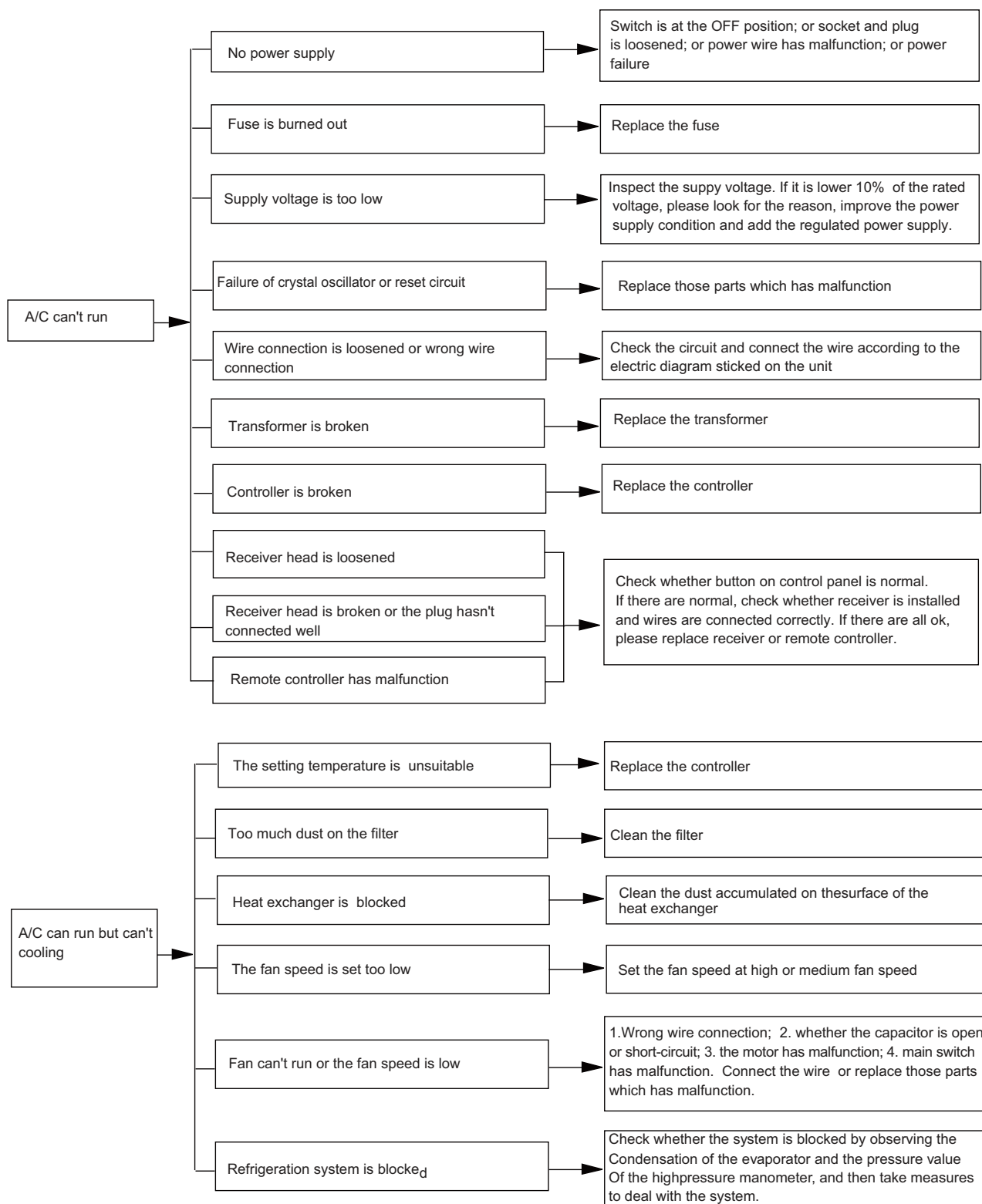
EP malfunction code is only applicable for cooling only unit.

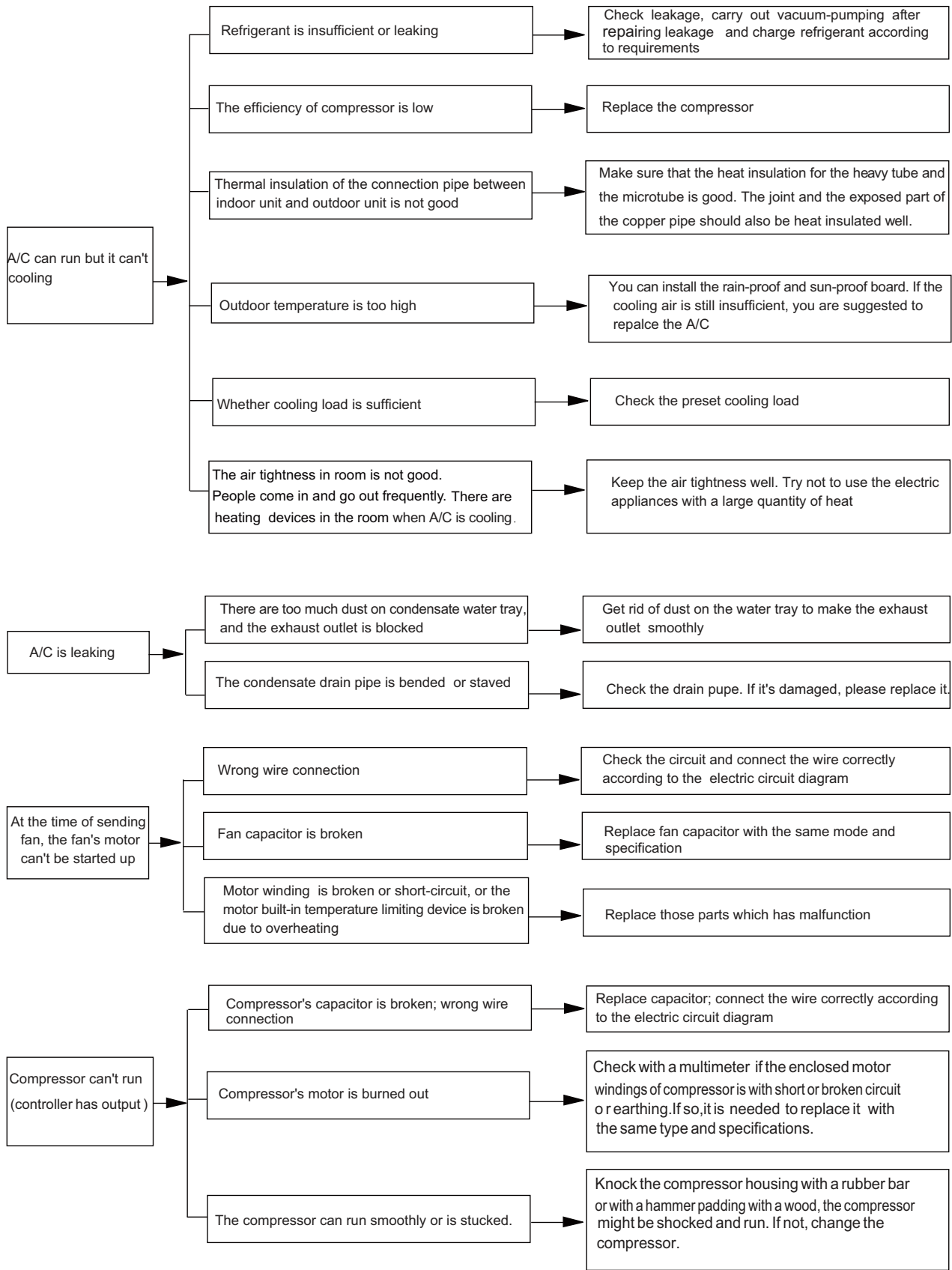
F1/F2/F4/FJ malfunction codes are only applicable for the mode with electric heater.

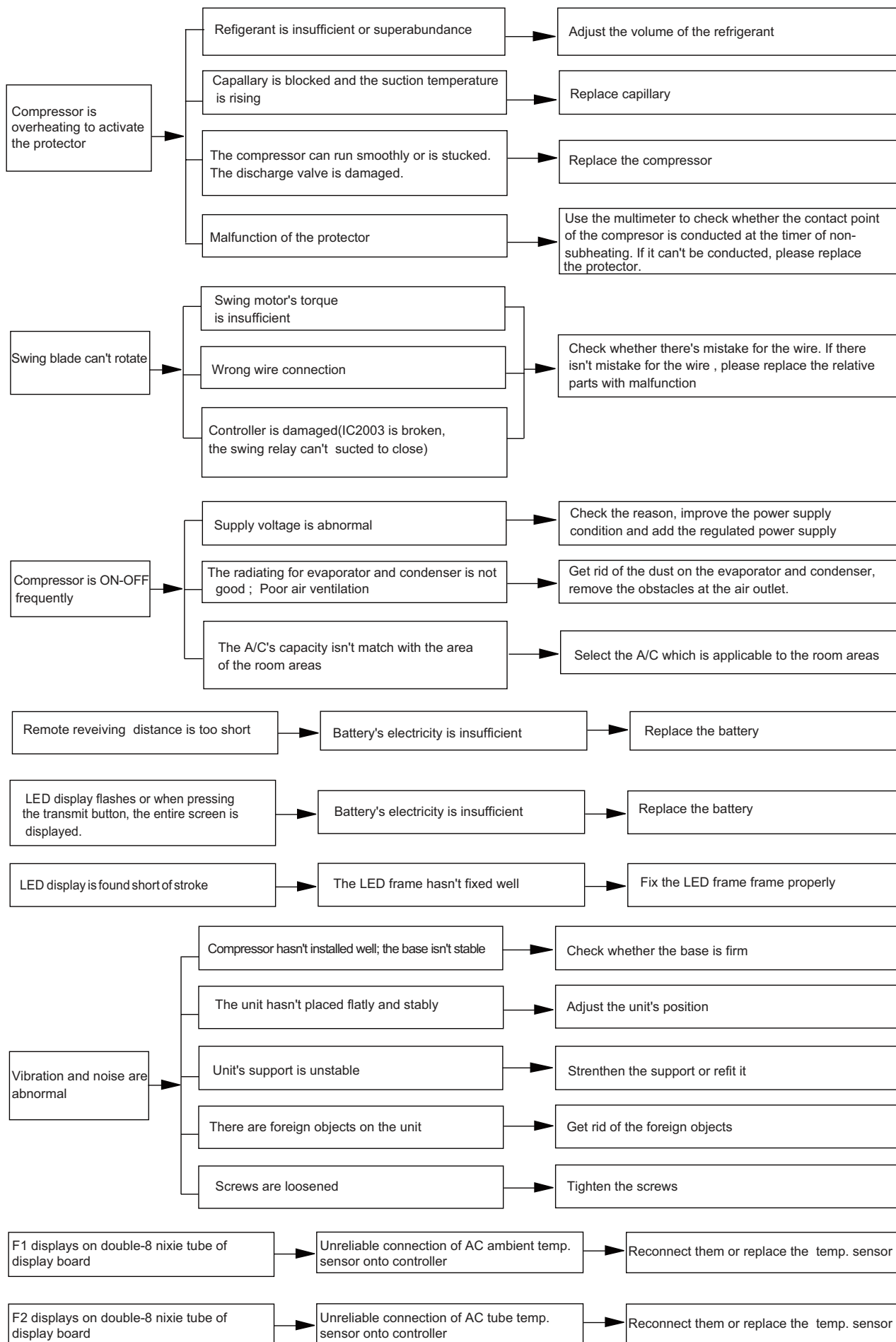
9.2 Malfunction of Temperature Sensor



9.3 Maintenance method for normal malfunction







Note: The information above is for reference only.